

Bolting Solutions Rail Industry



Peter Scott – PEG Corporate Account Manager
Newcastle upon Tyne - United Kingdom



Email: p.scott@hytorc.co.uk

Mobile: +44 (0)7841025113

CONTENT

- Introduction to HYTORC
- HYTORC Battery Gun Kits
- Track Application Solutions
- HYTORC Washer
- Rail Carriage Application Solutions
- New HYTORC J-Washer
- Q & A Session



The HYTORC mission is to optimise safety, quality and schedule in industrial bolting through innovative solutions, and an unyielding commitment to world class customer service.



- HYTORC was founded in 1968
- Family owned business
- Territory Managers & Area Managers
- Productivity Enhancement Group
- Innovative Fasteners & Torque Tooling



HYTORC BATTERY GUN KIT

BTM-1000-DOC

USB Connection Wire

Battery Charger

2 x 36V Batteries

Socket for Fishplates

Socket for Rail Screws

Socket for Clamps

9" Reaction Arm



FISHPLATE BOLTS

Previous Method – **Petrol Impact Wrench**

Weight – 25KG (With Oil)

High HAV output

Risk of Fire

Very Loud for houses/businesses nearby

Unknown torque output

Finish tightening using 6ft HTW



HYTORC Method – **BTM with Special Fixture**

Weight – 13KG

Consistent Torque Output

Safe to use with no HAVs or risk of fire

Low noise output

Recording function for accountability



CLAMPS

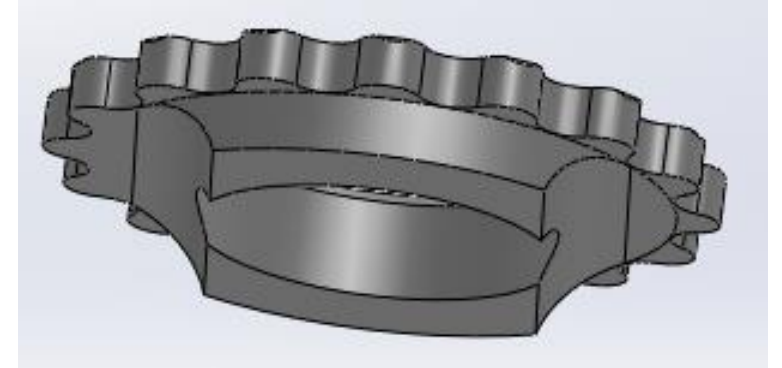


SCREWS



Rail Clamp Screws

- Specially Designed Washer to suit
- Reaction Washer without knurling sits within the profile
- Reaction arm free bolting so hand injuries are eliminated



HYTORC WASHER



HYTORC Washer System

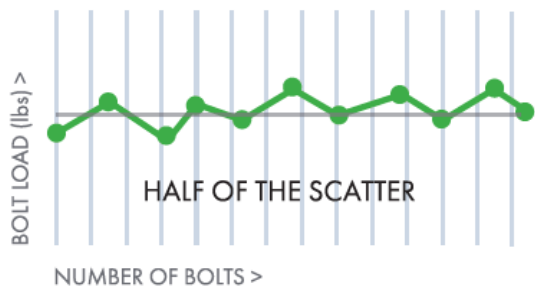


SAFETY

No pinch points
No need for a backing spanner

ACCURACY

Consistent Bolt Loads
Reduced Scatter



SPEED

- No waiting for the reaction arm
- Single person operation

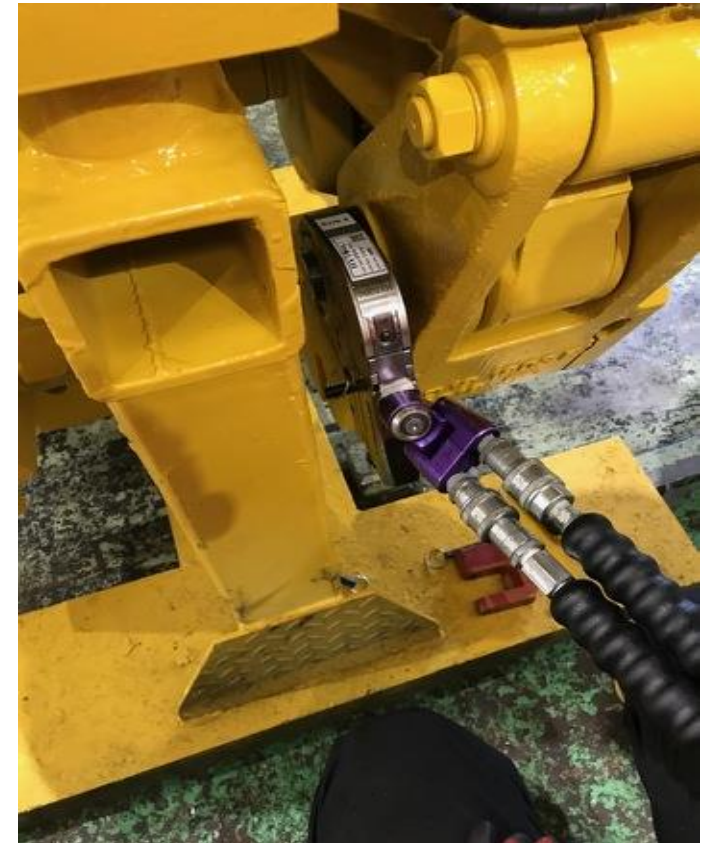


TAMPING MACHINE PICK ARM BOLTS

Previous Method – **6ft Hand Torque Wrench**



HYTORC Method – **Avanti 1 w/ Rotatable Arm**



RIDE HEIGHT ADJUSTERS

Previous Method – **Hand Torque Wrench**



HYTORC Method – **Stealth 2 with Washers & Tool Retainer**



BUFFER APPLICATION



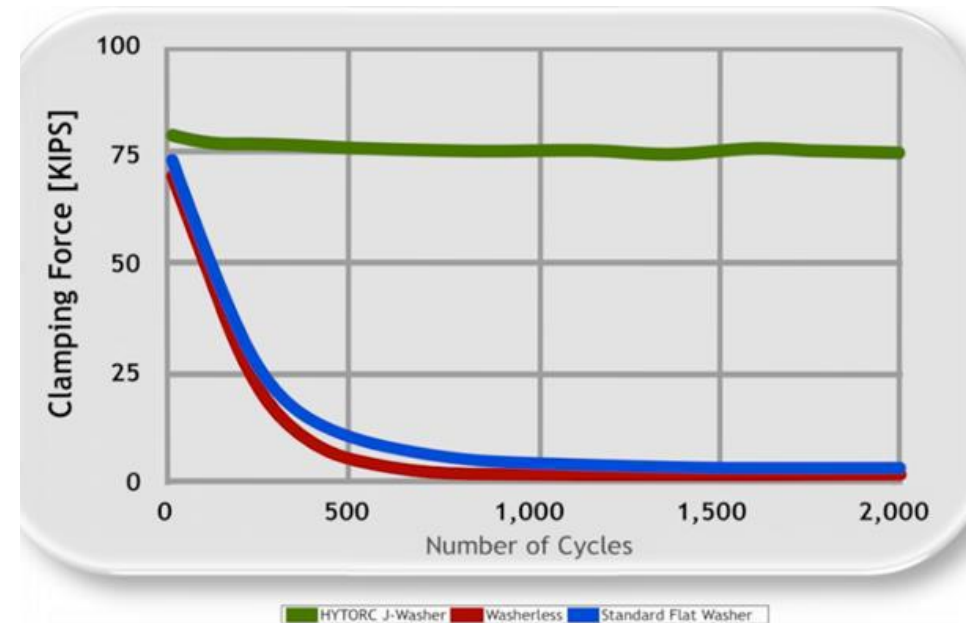
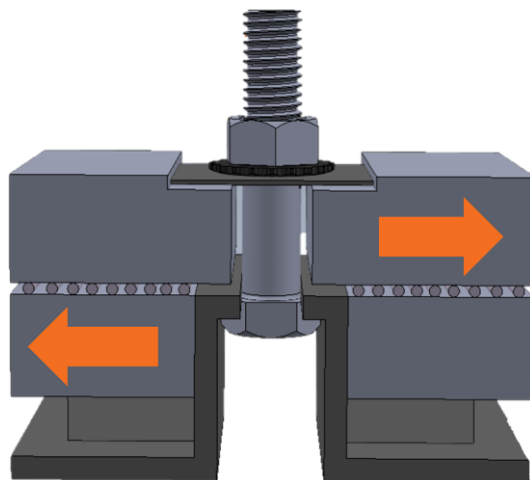
GEARBOX CONNECTION



HYTORC J WASHER



The new **HYTORC J-Washer** takes the HYTORC Reaction Washer to an entirely new level by adding a locking feature that minimizes loosening to keep bolts tight under dynamic loads.



HYTORC J-Washer

The J-Washer takes the
HYTORC Washer to the next
level by locking bolts tight



HYTORC



QUESTIONS?

INFO@HYTORC.COM

SALES@HYTORC.COM

P.SCOTT@HYTORC.CO.UK



THANK YOU - PLEASE STAY SAFE & WELL

HYTORC

Peter Scott
Unti 25 Moorland Way
Nelson Park Industrial Estate
Cramlington
NE23 1WE

Phone:
+44 (0) 7841025113

Email:
P.Scott@hytorc.co.uk

Online: hytorc.com