

# QUICK START GUIDE

## 1. REVIEW SAFETY INSTRUCTIONS



### IMPORTANT!

- Do not get wet.
- Avoid exposure to condensing humidity.
- Do not operate in temperatures above 140° F (60° C).
- Keep vents clear of dust, dirt and debris.
- Do not use in explosive environments.
- Secure tool to prevent from dropping.
- Keep hands clear of reaction pinch points.
- Use handle supplied with tool.
- Use only the battery and charger provided.
- Follow Lithium-Ion Battery Safety Instructions:

<https://library.hytorc.com/posts/3103>

## 2. INSPECT TOOL COMPONENTS (CLOCKWISE FROM LEFT)

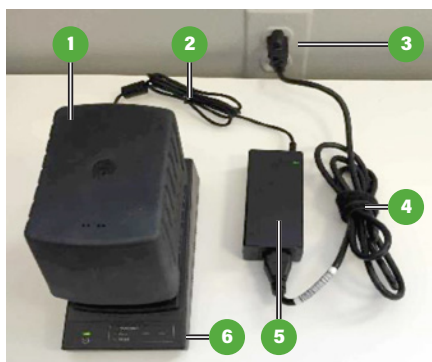


1. Square Drive
2. Reaction Spline
3. Planetary Gearbox
4. Handle Attachment
5. Directional Control
6. Cooling Vents
7. Control Panel
8. USB Micro Port
9. Pistol Grip
10. Eyelet
11. Trigger
12. Dual Speed Switch
13. Battery

## 3. CHARGE, TEST, AND INSTALL BATTERY

1. Battery
2. Charging Cable
3. Power Outlet
4. Power Cord
5. Power Supply
6. Charger
7. Charge Indicator
8. Tool Base
9. Test Button
10. Release Button

Connect charger to power supply and insert battery.



Charge indicator flashes while charging, turns solid green when fully complete (approximately 90 minutes).



Press test button: a fully charged battery should display 4 green lights.



Slide battery onto tool base until the release button snaps tight.

## 4. POWER-ON TOOL

### Power-On

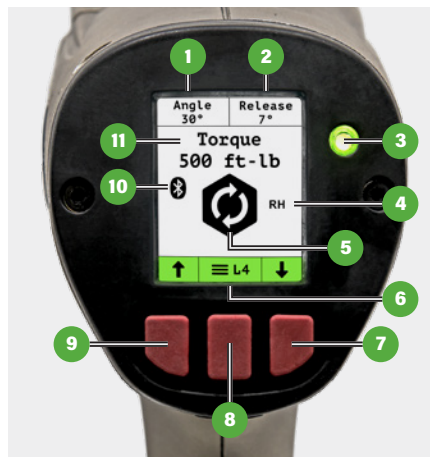
Push any button to power-on the tool.

### Power-Off

Push and hold the center button to power-off the tool.

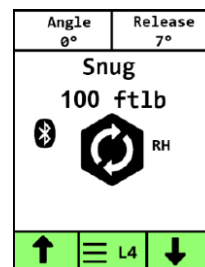
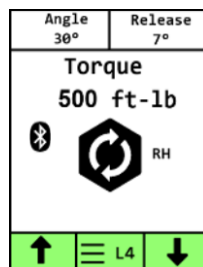
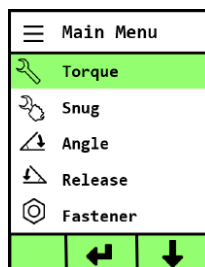


## 5. REVIEW CONTROL PANEL AND HOME SCREEN

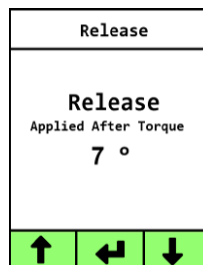
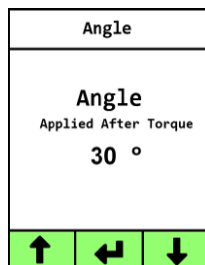


1. Angle
2. Release
3. Status Indicator
4. Fastener
5. Direction
6. Menu - Level
7. Right Scroll Button
8. Center Select Button
9. Left Scroll Button
10. Bluetooth
11. Torque

## 6. BASIC BOLTING SETUP



- Press center button to display Main Menu.
- Press left and right buttons to scroll, press the center button to select Torque, Snug, Angle, Release or Fastener screen.
- Press the left and right button to adjust, press the center button to select the value.
- After setting all basic functions, scroll and select Home to return to the Home Screen.



## 7. CONVENTIONAL BOLTING

- Slide reaction arm onto spline, align set screw with flat, tighten screw.
- Slide socket onto drive aligning pin with hole in the square drive.
- Push pin until flush against socket, secure O-ring.
- Set fastener to RH Right Hand.
- Secure back nut to prevent turning.
- Position socket on nut, brace reaction arm, pull and hold trigger until successful completion.



## 8. BOLTING WITH THE HYTORC WASHER

- Slide washer driver over square drive and align thumb screw with flat on spline.
- Tighten thumb screw and challenge to make sure it is secure.
- Set fastener to HWR HYTORC Washer Right Hand.
- Place tool driver on nut, engage lobes of reaction washer, pull and hold trigger until successful completion.



## 9. BOLTING WITH THE HYTORC NUT

- Slide HYTORC Nut driver over square drive and align set screw with flat on spline.
- Tighten set screw and challenge to make sure it is secure.
- Set fastener to HN HYTORC Nut.
- Place tool driver on HYTORC Nut, pull and hold trigger until successful completion.



## 10. CARE AND STORAGE

- When not in use, remove the battery from the tool.
- The LITHIUM SERIES II Tool should be stored in the carrying case when not in use.
- Calibrate periodically.
- Contact HYTORC for Service or Calibration.



HYTORC owns all content, copyrights, trademarks and patents in this document. © 2020 HYTORC. Any unauthorized use or distribution of any material from this document is strictly prohibited.

# HYTORC

**Headquarters:**  
333 Route 17 N., Mahwah, NJ 07430  
+1-201-512-9500

**Email:**  
info@hytorc.com

**Phone:**  
1-800-FOR-HYTORC

**Online:**  
hytorc.com