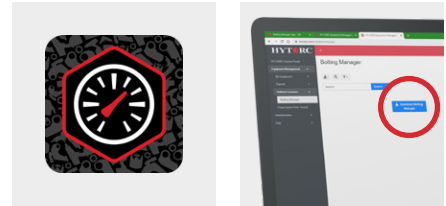


HYTORC BOLTING MANAGER QUICK START GUIDE

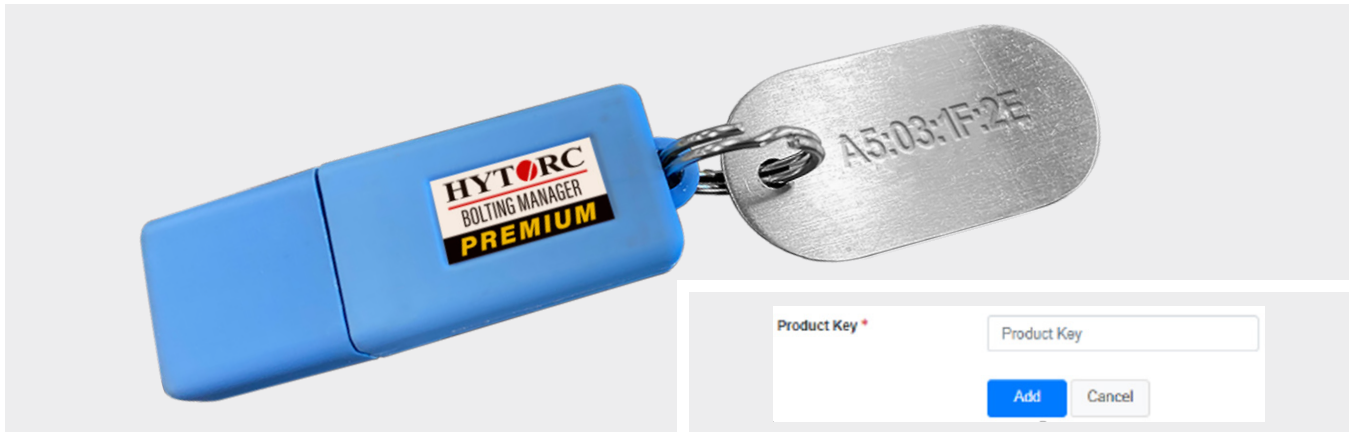
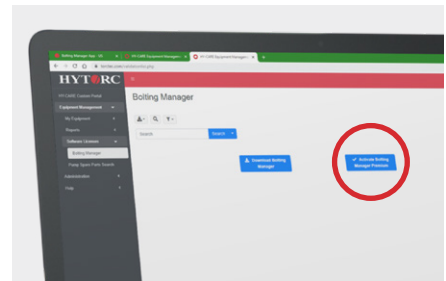
1. DOWNLOAD AND INSTALL

- Go to register.hytorc.com
- Register and sign in
- Select: **Equipment Management** → **Software Licenses** → **Bolting Manager**
- Click [**Download Bolting Manager**]
- Unzip the downloaded file
- Run the .EXE file to install Bolting Manager



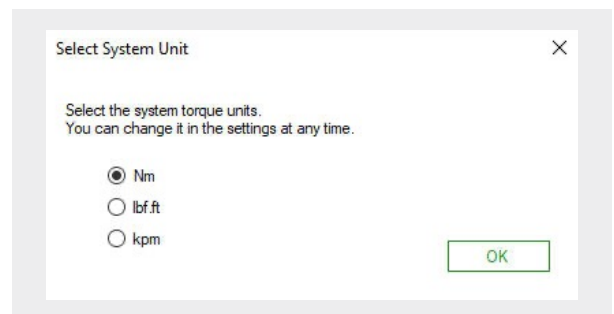
2. ACTIVATE A PREMIUM VERSION OF BOLTING MANAGER

- Sign in at register.hytorc.com
- Select: **Equipment Management** → **Software Licenses** → **Bolting Manager**
- Click [**Activate Bolting Manager Premium**] (See picture to the right)
- Enter your USB dongle key numbers and letters
(example: A5:03:1F:2E) exactly as they are on your dongle
- Click [**Add**]
- Your product key should be listed as "Active" on the key's list



3. BOLTING MANAGER INITIAL SETUP

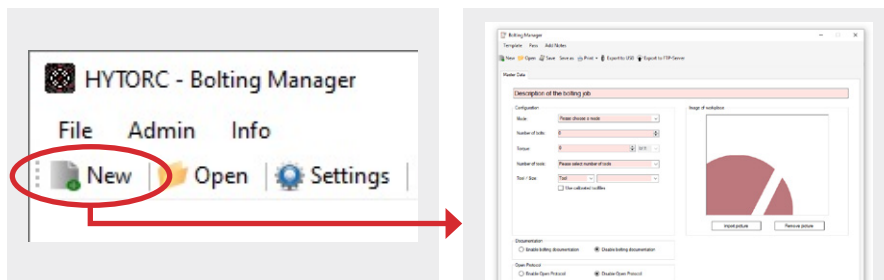
- Before starting Bolting Manager Premium version, insert the USB dongle into your PC.
NOTE: Without it, Bolting Manager operates as Base version.
- Enter your name (Base version)
Premium version automatically applies the registered user name
- Select default Units (Nm, lb.ft or kpm) for bolting templates.
NOTE: You can change Name and Units at any time in Settings.



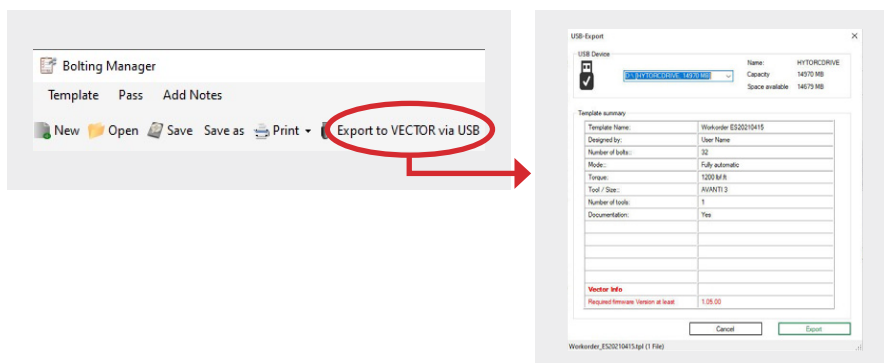
(Continued on the reverse side.)

4. BOLTING MANAGER'S BOLTING TEMPLATES FLOW OVERVIEW

- A. Start Bolting Manager and create a new template
- B. Save the templet onto your PC



- C. Insert a USB Flash drive into your PC
- D. Click [Export to VECTOR via USB]
- E. Select your USB Flash drive
- F. Click [Export] to save a VECTOR-ready file on the Flash drive



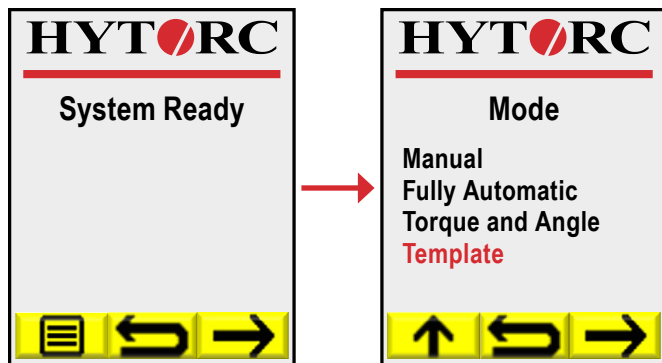
5. LOAD THE TEMPLATE INTO THE VECTOR PUMP MEMORY

- A. Insert the USB Flash drive with the templates into the VECTOR pump USB port
- B. On the VECTOR controller, select: **Menu → Settings → Features → Templates**
- C. Select **Load Templates**
- D. The templates will be copied from the USB Flash drive into the VECTOR's memory and saved internally for future use



6. BOLT WITH A SAVED TEMPLATE

On the VECTOR **System Ready** screen select → **Template**.



7. INTERNET CONNECTION

- **Recommended Monthly:** Run Bolting Manager with an Internet connection to check automatically for software update.
- **Required Every 6 Weeks:** Run Bolting Manager Premium with an Internet connection to re-validate the USB dongle.

HYTORC owns all content, copyrights, trademarks and patents in this document. © 2021 HYTORC. Any unauthorized use or distribution of any material from this document is strictly prohibited.



Headquarters:
333 Route 17 N., Mahwah, NJ 07430
+1-201-512-9500

Email:
info@hytorc.com

Phone:
1-800-FOR-HYTORC

Online:
hytorc.com