

# HYTORC

The World's Most Trusted Industrial Bolting Systems

## SMART BOLTING SOLUTIONS

HYTORC's mission is to optimize safety, quality and schedule in industrial bolting through smart technology, innovative solutions, and an unyielding commitment to world-class customer service.



SMART BOLTING USING THE LITHIUM SERIES AND WASHER DRIVER

## CELEBRATING 50 YEARS OF BOLTING SOLUTIONS

This booklet showcases how HYTORC integrates smart technology into our industrial bolting systems:

- Electric and Pneumatic Torque Tools
- Vector Hydraulic Pumps
- Yield Control Bolting
- HYTORC Flange Manager
- HYTORC Engineering
- HYTORC Customer Portal

HYTORC makes industrial bolting safer and simpler. With 50 years of experience, we are singularly focused on developing the highest quality industrial bolting systems. HYTORC is the most trusted name in the industry. From steel mills and mining equipment to refineries, power plants, and wind turbines; we have developed solutions for every bolting application imaginable. For custom projects, our highly experienced engineering team is at your service to design the most efficient solution for your job with simple operation and economical pricing in mind.

# TORQUE TOOLS, HYDRAULIC PUMPS, AND YIELD CONTROL BOLTING

## TORQUE TOOLS

### LITHIUM SERIES WITH DOCUMENTATION



The LITHIUM SERIES is the ultimate solution for portability and convenience on industrial bolting jobs. Enter your desired torque followed by the angle and when you pull the trigger the tool will automatically apply the torque, pause, and then apply the programmed angle. Best of all, all of this information is captured and documented, giving you the ability to upload this to a computer or laptop for future reference

### JGUN DIGITAL WITH DIGITAL READOUT



Unlike other systems that require a separate filter, regulator and lubrication system, the jGUN DIGITAL is the world's first torque-adjustable pneumatic multiplier with a digital readout and FRL-free operation. Its patented design eliminates the need for this add-on for the highest level of portability and convenience.

## HYDRAULIC PUMPS

### HYTORC VECTOR



The HYTORC Vector is the world's most advanced hydraulic power pack. The first pump to offer LCD pendant control and automated regulation, HYTORC is taking industrial bolting to the next level. Industrial bolting has become more intuitive and smarter than ever before. Thanks to its 3 stage high speed flow motor and gauge-free operation, it allows the operator to simply select the HYTORC tool they are using and the desired torque on the remote. Push the button and allow the pump to do all the work.

#### MAIN FEATURES

- 15-ft. Hand-Held Digital Remote Control and Cable
- Fully or Semi-Automatic 4-Tool Adaptor
- Documentation
- Torque and Angle (coming soon)

## YIELD CONTROL BOLTING

### ECO2TOUCH



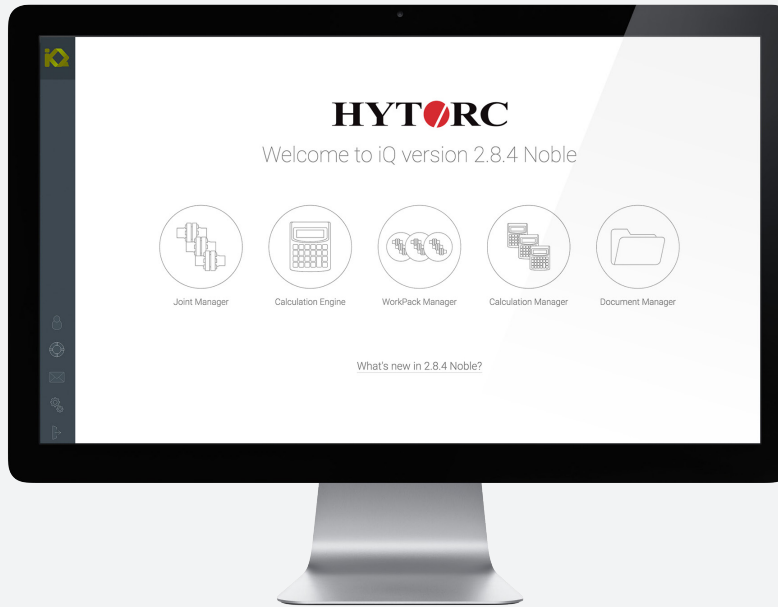
The HYTORC Eco2Touch control is the corresponding electronic control unit at the cutting edge of processor technology. It is positioned on the EcoPUMP and is operated via a Touch display. This unique control method allows tightening any bolt safely and to the maximum yield by using an intuitive and simple Touch control. The hydraulic power pack is controlled via icons on the Touch control, just as on a smartphone. The parameter settings are carried out independently from other operating systems and without a laptop or PC.

#### MAIN FEATURES

- Touch Display and Control tablet
- Rotational Angle Sensors
- Documentation
- Precisely Measures Torque, Rotation Angle, Stretch, Pressure

# ONLINE FLANGE MANAGEMENT SYSTEM

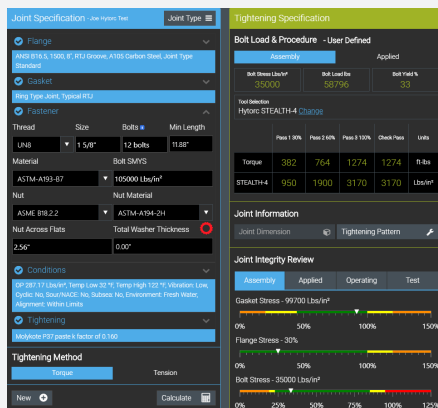
## HYTORC FLANGE MANAGER



### ABOUT THE HYTORC FLANGE MANAGER

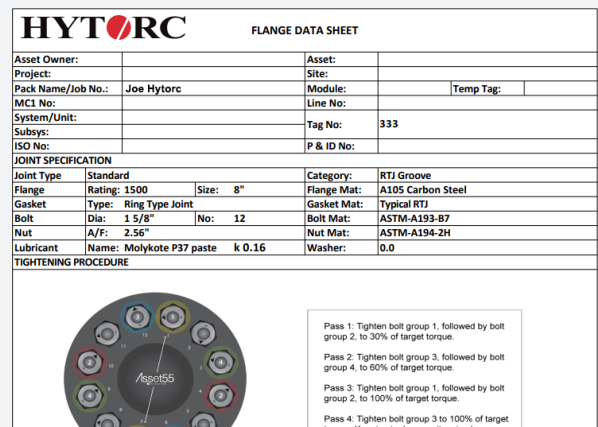
The HYTORC Flange Manager is the industry's leading provider of bolted-joint integrity solutions. This bolted joint management software supports HYTORC tool operators to construct and maintain their assets more safely, more efficiently and more cost effectively. The Flange Manager is the only software on the market that derives its bolt load calculations from the very latest standards (ASME PCC-01 & Energy Institute guidelines), placing power in the hands of HYTORC clients to make quick and safe engineering decisions.

### CALCULATION ENGINE



Users can carry out quick and safe calculations across thousands of combinations of flange/gasket/fasteners. The Flange Manager can be used on any internet-capable device and offers safe and secure online storage of joint data.

### DOCUMENTATION



Produce auto-populated joint documents for tightening reports and procedures.

## HYTORC ENGINEERING

### GOOGLE® GLASS\*\*



For the highest level of productivity improvement, HYTORC offers free engineering consultation to propose the most efficient solution for your bolting challenges. We have experience customizing our equipment to work with Open Protocol systems that are frequently used and required at large scale manufacturing facility to making our tools compatible with cutting edge technology such as Google Glasses. If HYTORC's "out of the box" SMART Solutions don't meet your companies requirements, contact us today for a FREE consultation.

### TORCSAFE



Improve your productivity with HYTORC's preventative maintenance solution for industrial bolting systems. With **TORCSafe**, you can be sure that all of your HYTORC equipment is ready when you need it. Our highly trained technicians will remind you when service is due and schedule an on-site visit to inspect, repair and calibrate your equipment as required.

### WEB-BASED INVENTORY MANAGEMENT

	Account	Tool Model	Serial Number	Asset/Equipment Number
+	1. General Electric	AVANTI 5 DUAL	D644	WNDUST10098
+	2. General Electric	AVANTI 3	D2030	WNDUST10088
+	3. General Electric	Back Mount Gauge	84504-2	104391
+	4. General Electric	Bottom Mount	82912-7	104494
+	5. General Electric	Back Mount Gauge	6969	103676
+	6. General Electric	Bottom Mount	82912-12	104486
+	7. General Electric	Back Mount Gauge	84504-1	10439
+	8. General Electric	MXT .7	1281	WNDUST10144
+	9. General Electric	MXT .7	1265	WNDUST10141
+	10. General Electric	MXT .7	1465	WNDUST10178
+	11. General Electric	STEALTH 2	S2F0802-48	100795
+	12. General Electric	STEALTH 4	54F1218-65	WNDUST11586
+	13. General Electric	STEALTH 4	54F1218-73	WNDUST11587
+	14. General Electric	STEALTH 4	54F0722-008	WNDUST10332
+	15. General Electric	Bottom Mount	15279	109815

HYTORC's secure web portal gives you up-to-date information on all of your bolting equipment, including printable calibration certificates and updated tool location information. Check calibration status at a glance and receive notifications for upcoming calibration expirations.

\*GOOGLE® and GLASS® are registered trademarks of GOOGLE LLC.



**Headquarters:**  
333 Route 17 N., Mahwah, NJ 07430  
+1-201-512-9500

**Email:**  
info@hytorc.com

**Phone:**  
1-800-FOR-HYTORC

**Online:**  
hytorc.com