

HYTORC

The World's Most Trusted Industrial Bolting Systems

INDUSTRIAL BOLTING 4.0



LET HYTORC BE YOUR
GUIDE TO THE FUTURE
OF SAFER, FASTER AND
MORE INTELLIGENT
INDUSTRIAL BOLTING.

CELEBRATING 50 YEARS OF BOLTING SOLUTIONS

This booklet showcases how HYTORC integrates modern technology into our industrial bolting systems:

- Electric and Pneumatic Torque Tools
- Hydraulic Pumps
- Self-Reacting Fasteners
- Parallel Joint Closure™ (PJC)
- Yield Control Bolting
- Flange Calculator
- HYTORC Connect App
- HYTORC + Cumulus
- HYTORC Engineering and Modern Solutions
- HY-CARE
- The HYTORC Standard

HYTORC makes industrial bolting safer and simpler. With over 50 years of experience, we are singularly focused on developing the highest quality industrial bolting systems. HYTORC is the most trusted name in the industry. From manufacturing and mining equipment to refineries, power plants, and wind turbines; we have developed solutions for every bolting application imaginable. For custom projects, our highly experienced engineering team is at your service to design the most efficient solution for your job with simple operation and economical pricing in mind.

INNOVATIONS IN TORQUE TOOLS, PUMPS, SELF-REACTING FASTENERS, AND METHODS

ELECTRIC

LITHIUM SERIES® II



The LITHIUM SERIES® II Electric Torque Tool is the next revolution in bolting technology redesigned from the ground up with expanded functionality, greater durability, and intuitive usability. This lightweight 36 Volt battery powered tool, with capacity up to 5,000 ft-lbs, is the ultimate solution for strength and portability in industrial bolting jobs worldwide. This tool is compatible with conventional sockets, the HYTORC Washer, and the HYTORC Nut.

PNEUMATIC

jGun® DIGITAL Single Speed



Unlike other systems that require a separate filter, regulator and lubrication system, the jGun DIGITAL Single Speed is the world's first torque-adjustable pneumatic multiplier with a digital readout and FRL-free operation. Its patented design eliminates the need for this add-on for the highest level of portability and convenience.

HYDRAULIC PUMPS

HYTORC VECTOR



The HYTORC VECTOR is the world's most advanced hydraulic power pack. The first pump to offer LCD pendant control and automated regulation, HYTORC is taking industrial bolting to the next level. Industrial bolting has become more intuitive and smarter than ever before. Thanks to its 3-stage high speed flow motor and gauge-free operation, it allows the operator to simply select the HYTORC tool they are using and the desired torque on the remote. Push the button and allow the pump to do all the work.

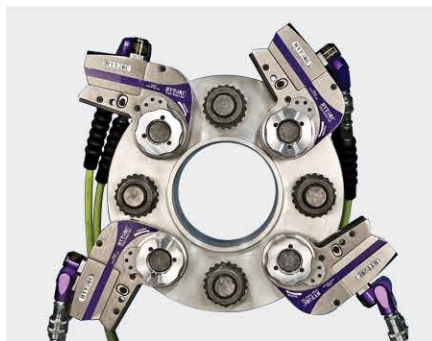
SELF-REACTING FASTENERS

THE HYTORC J-WASHER - TORQUE



The HYTORC J-Washer's award-winning design enhances job safety and efficiency by eliminating the need for a reaction arm, while locking the nut into place to avoid loosening.

PARALLEL JOINT CLOSURE™ (PJC)



Parallel Joint Closure™ provides substantial productivity enhancements using a hands-free method which increases hand safety and reduces hand injury incidents. This enhanced bolting method, recommended by ASME PCC-1, will reduce any bolting job time by at least 50%.

YIELD CONTROL BOLTING

ECO2TOUCH PUMP



Get the most out of your bolted connections using yield-controlled tightening. Simply turn on the pump without having to enter any parameter. The pump will automatically look for the maximum bolt load and stops when the yield-point is reached.

THE HYTORC NUT - TENSION



HYTORC Nut designs eliminate galling and deliver unsurpassed precision and repeatability with guaranteed fastest assembly/ disassembly times.

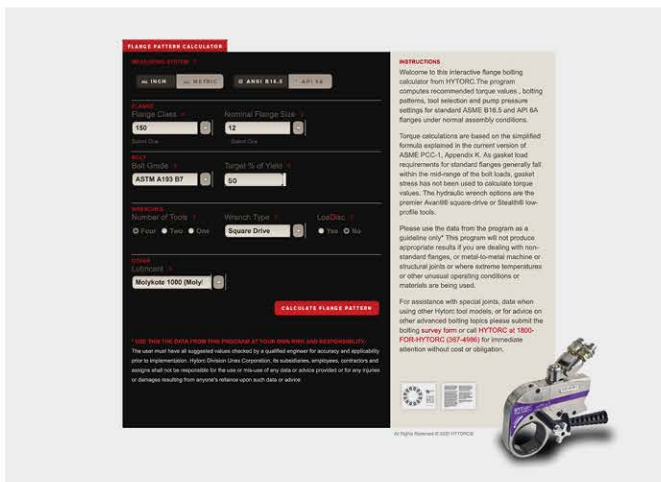
ONLINE FLANGE MANAGEMENT SYSTEM

HYTORC CONNECT APP



The **HYTORC Connect App** enables wireless data exchange between the **LITHIUM SERIES® II Electric Torque Tool** and a Windows® PC. The app provides a convenient user interface to configure bolting parameters and send them to the tool. The app also serves as a repository for bolting results, receiving data from the tool in real-time or batch operation. All initial settings and tool administration can be achieved via the app.

FLANGE CALCULATOR



Users can carry out quick and safe calculations across thousands of combinations of flange/gasket/fasteners. The Flange Calculator can be used on any internet-capable device and offers safe and secure online storage of joint data.

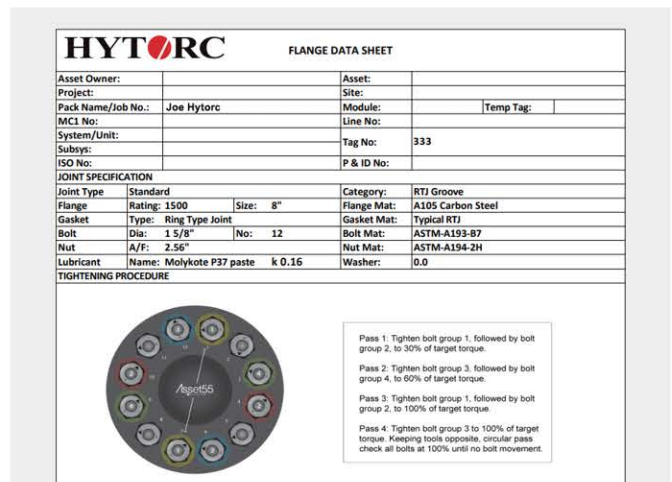
HYTORC + CUMULUS



In 2019, HYTORC and Cambridge, Massachusetts-based Cumulus Digital Systems, Inc. joined forces on an innovative partnership to bring 21st century tech into the bolting industry in new and exciting ways. The cumulus software allows for comprehensive wireless data capturing, providing unprecedented levels of visibility and transparency translating into significant job safety and quality enhancements, while reducing job time.

“The partnership has been great for HYTORC and Cumulus, but it’s been even better for our customers,” said HYTORC’s President Eric Junkers. “Cumulus provides the software; we provide the tooling. With both our companies focused on what we do best, that equates to gains and benefits for our customers in just about every aspect of their projects, and the proof is out there!”

DOCUMENTATION



Produce auto-populated joint documents for tightening reports and procedures. Compatible with all open protocol networks.

HYTORC ENGINEERING AND MODERN SOLUTIONS

HYTORC ENGINEERING

AUGMENTED AND VIRTUAL REALITY (AR/VR) SUPPORT



For the highest level of productivity improvement, HYTORC offers free engineering consultation to propose the most efficient solution for your bolting challenges. We have experience customizing our equipment to work with Open Protocol and Augmented Reality systems that are frequently used and required at large scale manufacturing facility to making our tools compatible with cutting edge technology. If HYTORC's "outside-the-box" modern solutions don't meet your company's requirements, contact us today for a FREE consultation.

HY-CARE



HY-CARE Service Plans* provide peace of mind protection and offer a no deductible plan to protect you from unexpected bolting equipment repair costs and downtime after your standard equipment warranty expires. On average, a tool with HY-CARE lasts up to five times longer in service.

*May not be available in all locations. Please contact your local HYTORC representative for more information or visit us online at hytorc.com/hy-care.

ROBOTIC PROCESS AUTOMATION (RPA)



RPA in industrial bolting is using process automation technology with software to direct/guide robots or artificial intelligence workers to perform bolting functions. Companies pursuing Industry 4.0 are now using HYTORC bolting digitalization to drive productivity gains.

THE HYTORC STANDARD



With over 50 years of experience focused entirely on developing the highest quality industrial bolting systems, HYTORC remains committed to higher performance and service and offers superior technology, quality, and customer support. That's the power of HYTORC. For more information, please visit us online at hytorc.com/standard.

NOTICE OF PROPRIETARY RIGHTS: HYTORC Division UNEX Corporation ("HYTORC") is the owner of all content included in this document and all right, title and interest to such content shall remain with HYTORC. **COPYRIGHT NOTICE:** © 2021 HYTORC. Any unauthorized use or distribution of any material from this document, without HYTORC's written permission, is strictly prohibited. **TRADEMARK NOTICE:** This document contains numerous registered trademarks and servicemarks of HYTORC in the U.S. and other countries. **PATENT NOTICE:** Products in this document are covered by numerous registered and/or pending patents in the U.S. and other countries.

HYTORC

Headquarters:
333 Route 17 N., Mahwah, NJ 07430
+1-201-512-9500

Email:
info@hytorc.com

Phone:
1-800-FOR-HYTORC

Online:
hytorc.com